

STATE OF UTAH

**POINT OF THE MOUNTAIN
DEVELOPMENT COMMISSION**

Purposes of the Effort

Utah Code # 63C-17-104

- Maximizing job creation
- Ensuring a high quality of life for residents in and surrounding the project area
- Strategic residential and commercial growth
- Preservation of natural lands and expansion of recreational opportunities
- Provision of a variety of community and housing types that match workforce needs
- Planning for future transportation infrastructure and other investments to enhance mobility and protect the environment

Phase 1

- Fall 2016-Spring 2017
- Stakeholder organization
- Public engagement
- Research: markets, demographics, best practices
- Conceptual vision/goals

DELIVERABLES:

- Conceptual vision/goals
- Analysis of best practices, markets, etc.

Phase 2

- Spring-Fall/Winter 2017
- Scenario development and modeling
- Public and stakeholder input on scenarios

DELIVERABLES:

- Well-analyzed scenarios and findings
- Initial financing concepts

Phase 3

- Winter 2017-2018
- Funding strategy
- Vision development
- Implementation underway
- Final Report

DELIVERABLES:

- Vision and implementation plan
- Implementation underway

Stakeholder and Public Input Methods

- Stakeholder Kickoff at Adobe
 - 175 in attendance
 - Over 100 written comments
- 9 topic specific meetings
 - 130 in attendance
- Presentations
- Website - Public input online
 - Over 7,500 website hits
 - Over 300 comments
- Employee Survey
 - 6 tech companies
 - 537 responses



Expert Research

- Market analysis- RCLCO
- Environment- SWCA
- Transportation- Fehr and Peers
- Utilities- Horrocks and Sherwood



Media Coverage

Utahns invited to attend workshops on Point of the Mountain's future

Deseret News

Published: Jan. 20, 2017 5:45 p.m.

Updated: 21 hours ago

[f](#) [t](#) [1](#) Comment

1 of 1



Deseret News

Laura Seitz, Deseret News

Big Ideas

Big Ideas - Public Input	
Open space preservation/recreational opportunities	67
Planned, mixed-use/walkable communities	45
Major sports arena/stadium (MLB, NFL, etc.)	24
Theme Park (Lagoon, Disneyland, etc.)	24
Attracting high-tech businesses	17
Don't move prison/rebuild it where it is	16
Build TRAX lines/expand existing lines/other rail opportunities	15
Maintain an emphasis on arts/culture	14
National-scale lab/university/higher education	10
Explore sustainable ideas (wind/solar power, green roofs, etc.)	7
Use the region as a way to showcase new technologies	6
Move the Hogle Zoo to Point of the Mountain	5
Ensure proper disaster resilience/planning	4
Create a master plan for the area	4
Protect/involve agriculture	2

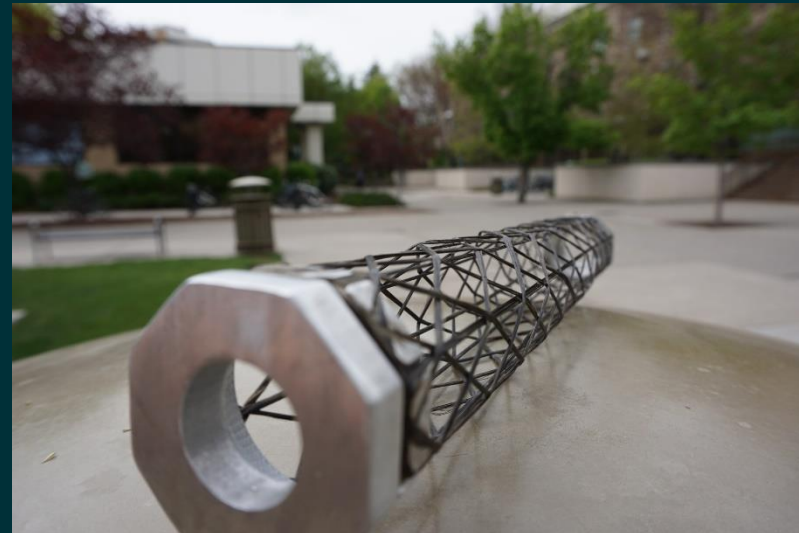
Big Ideas - Stakeholder Input	
High-tech university, Stanford-like, national scale/lab, National Research System	38
Greenspace	34
Innovative Transportation--electric vehicles/charging stations, self-driving vehicles	26
Mixed-use developments	20
Mass Transit	17
Recreation hubs for paragliding, skiing, mountain biking, Jordan River	14
Live/work/play hubs	13
Tax revenue source for open space	12
Preserve East-West corridors	11
Non-traditional zoning, moving away from Euclidean zoning	11
Regional placemaking and success, quality of life, jobs	10
Entertainment & Amenities	9
Double-track and electrify FrontRunner	8
Tax Policy, state/local tax system	7
Compatible borders between counties/jurisdictions	5
Active transportation/connectivity	5
Regional transportation - Change UTA Rules	5
Second Downtown	4
Gondola/tram connection to resorts	3
Recognize the 'Utah model'	2
Revitalize Utah Lake	2
Collaborative education environment	2
Globally-competitive environment	1
Education for future workforce, workforce development center	1
Shuttles	1

Big Ideas

- University/research presence
- Open space/outdoor recreation
- Innovative transportation (electric vehicles, autonomous vehicles, etc.)
- Mixed use development and live/work/play hubs
- Public transportation
- Sports arena
- Theme park
- Environmental sustainability, innovation, demonstration project

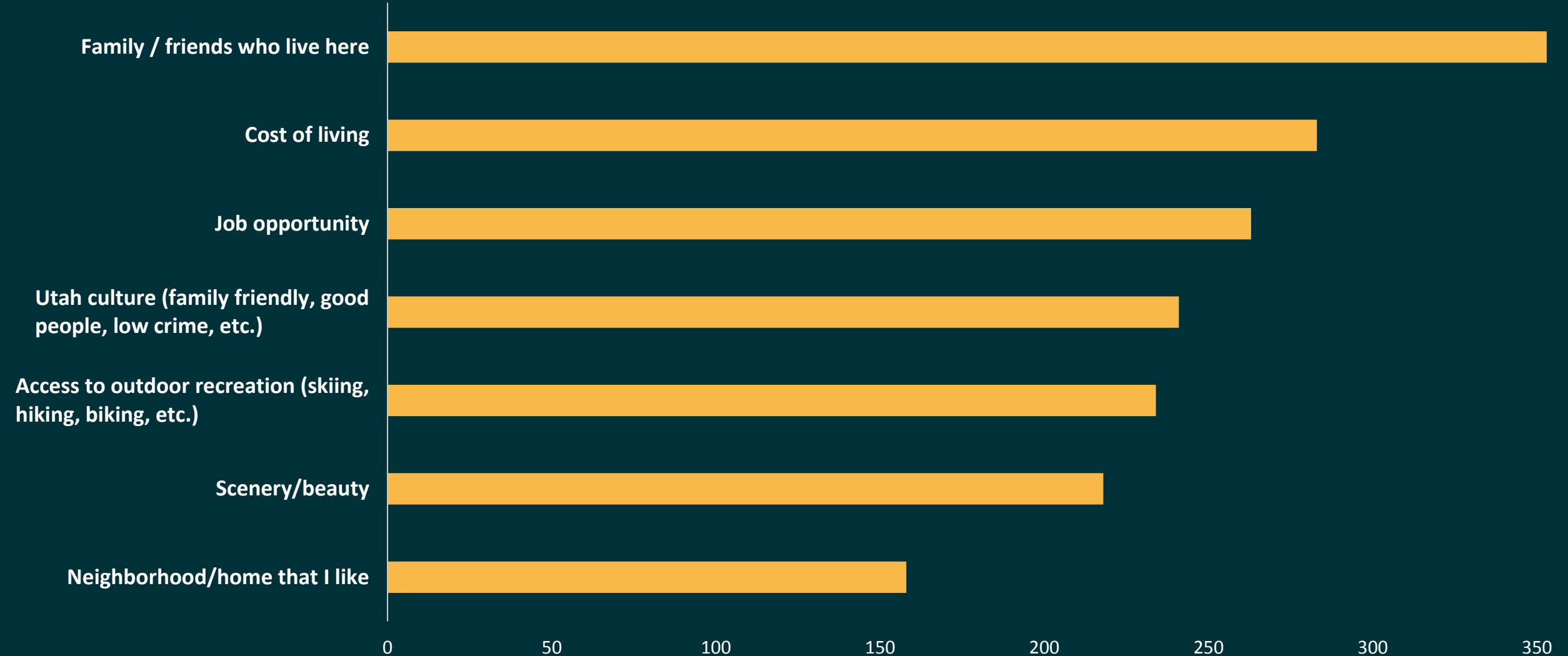
Out of the Box Thinking

"In 1889, the Eiffel Tower was built in Paris for the World's Fair, demonstrating to the world the endless possibilities of steel as a structural building material. It was a bold endeavor, and highly criticized, but now stands as a beloved icon recognizable by the entire world. Utah is home to a brand-new building material that is 1/10 the weight of steel and 10 times stronger. It's called the IsoTruss and was invented by a professor at BYU. What better time to showcase this amazing new technology to the world? And what better way to do it than by building some big, bold, iconic structure using IsoTruss technology at Point of the Mountain."

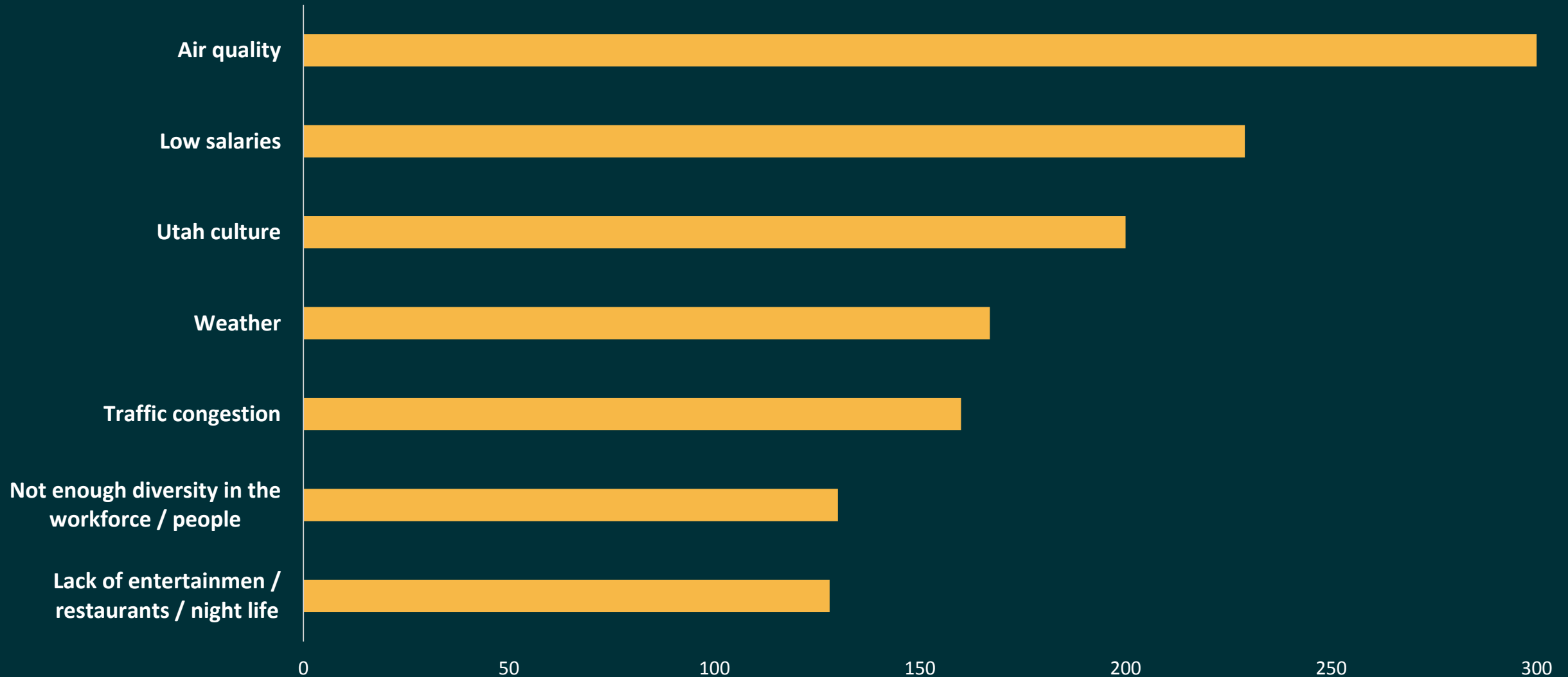


Employee Survey

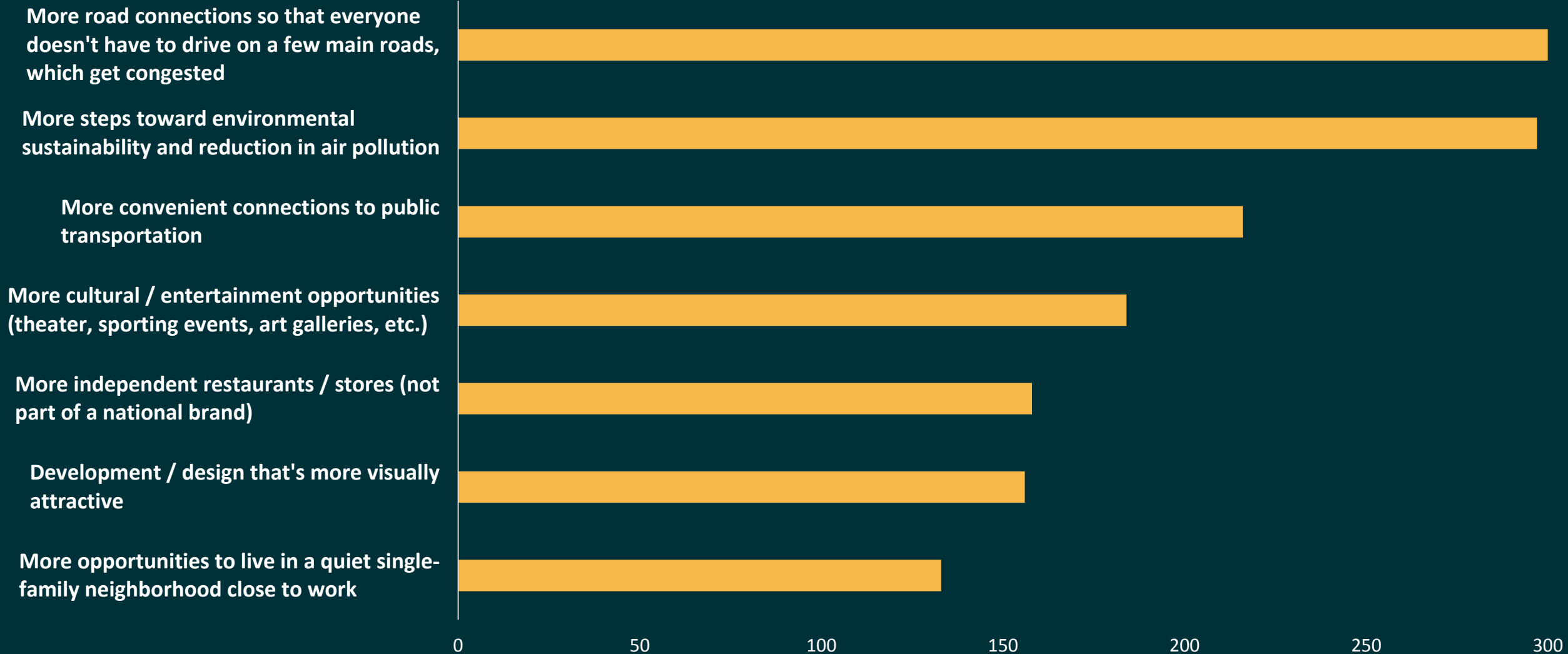
Top Reasons You Chose to Move to/Stay in Utah



Top Reasons You Might Move Away from Utah

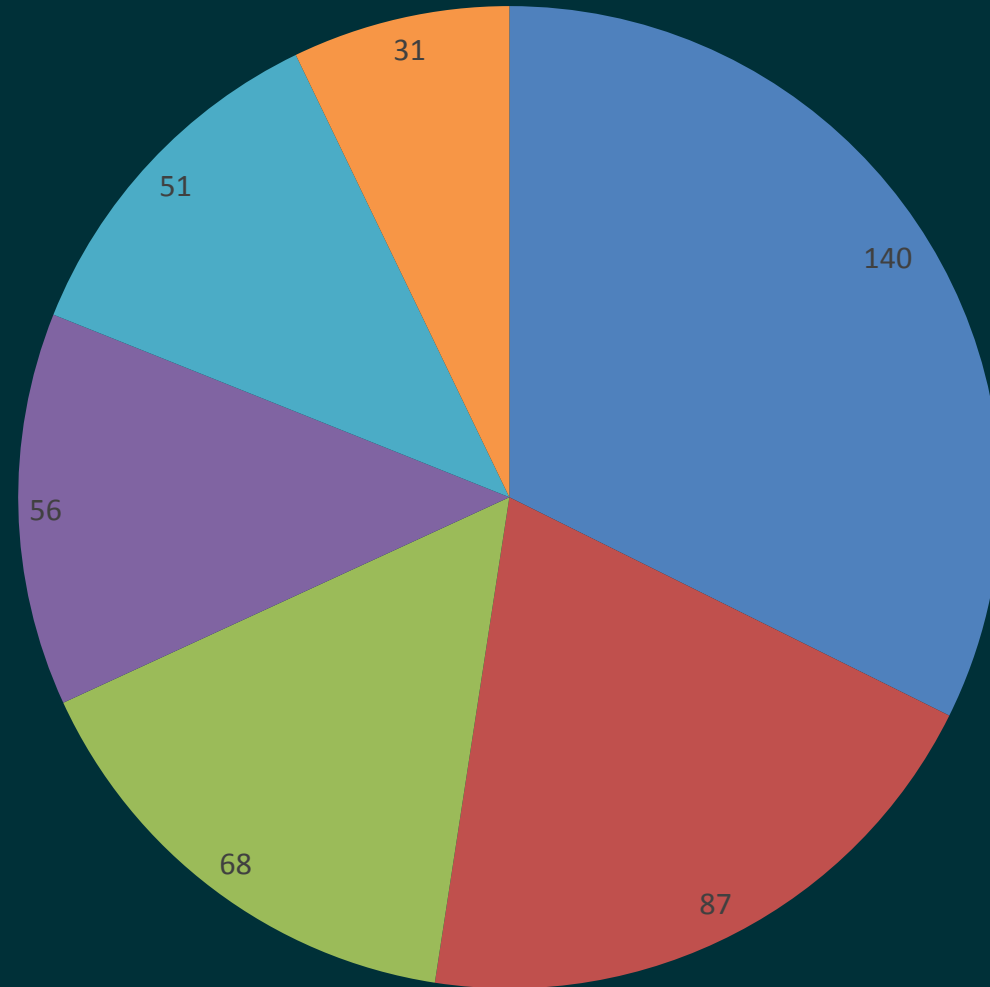


Top Things You Would Change About the Point of the Mountain



Ideal Housing Choices

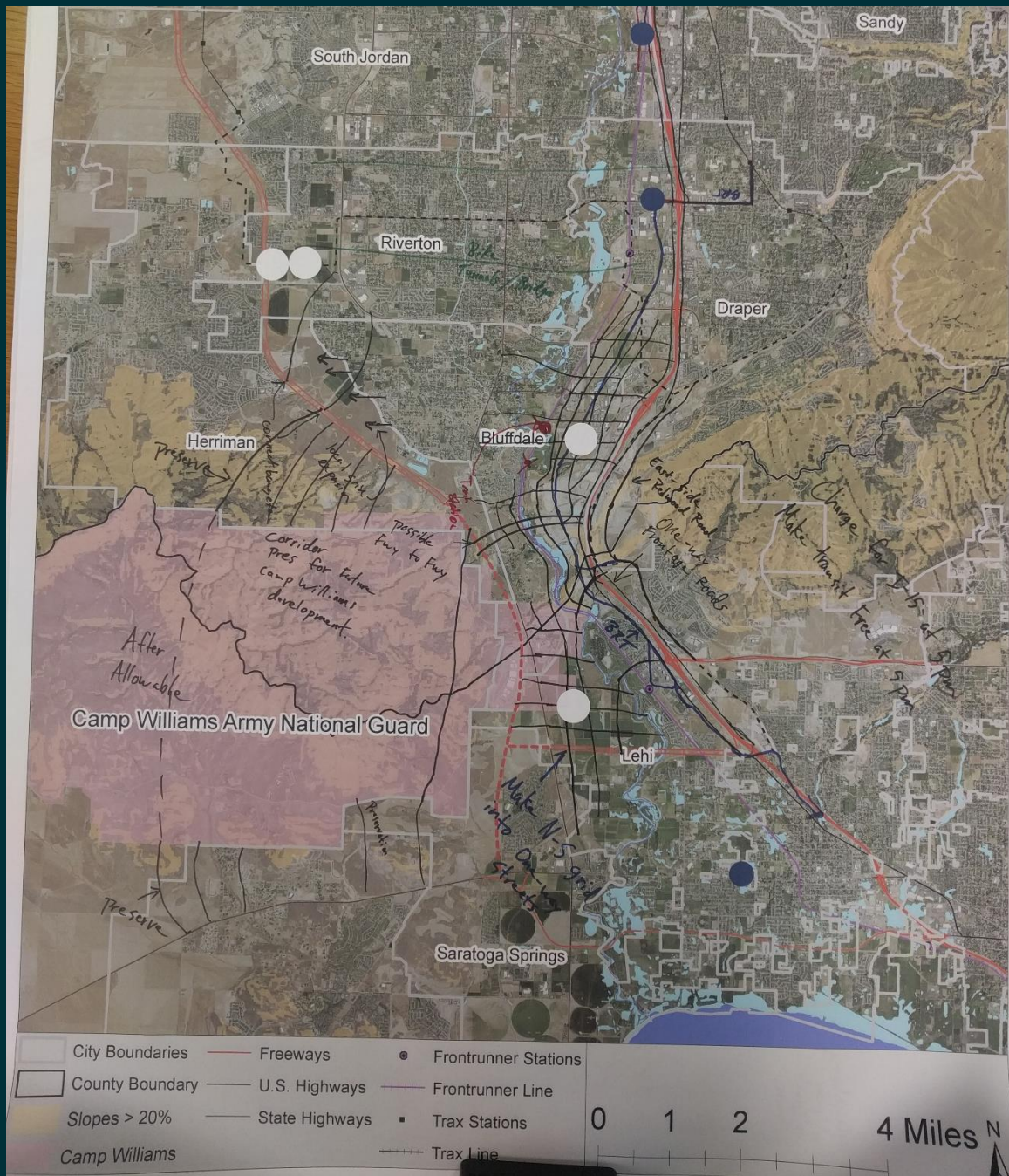
- Low density residential (Examples: Suncrest, Alpine)
- Walkable suburban (Examples: Daybreak, Vineyard/Geneva)
- Urban and mixed-use (Examples: Downtown SLC, Provo, Sugar House)
- Residential-only suburban (Examples: Rosecrest, the Ranches)
- Low-density urban (Examples: the Avenues, Bingham Junction)
- Small Town or rural (Examples: Payson, Tooele, Heber City)

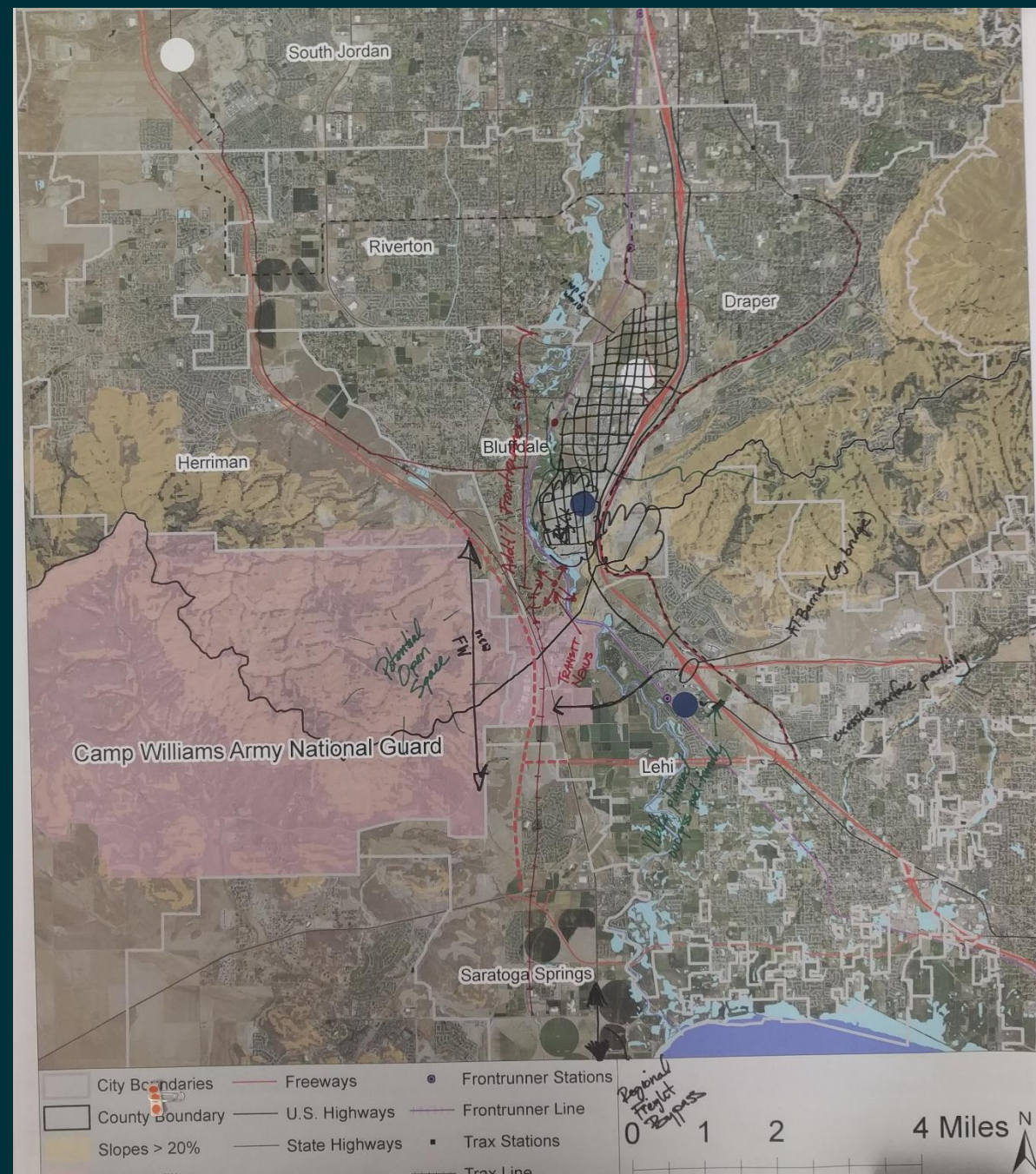
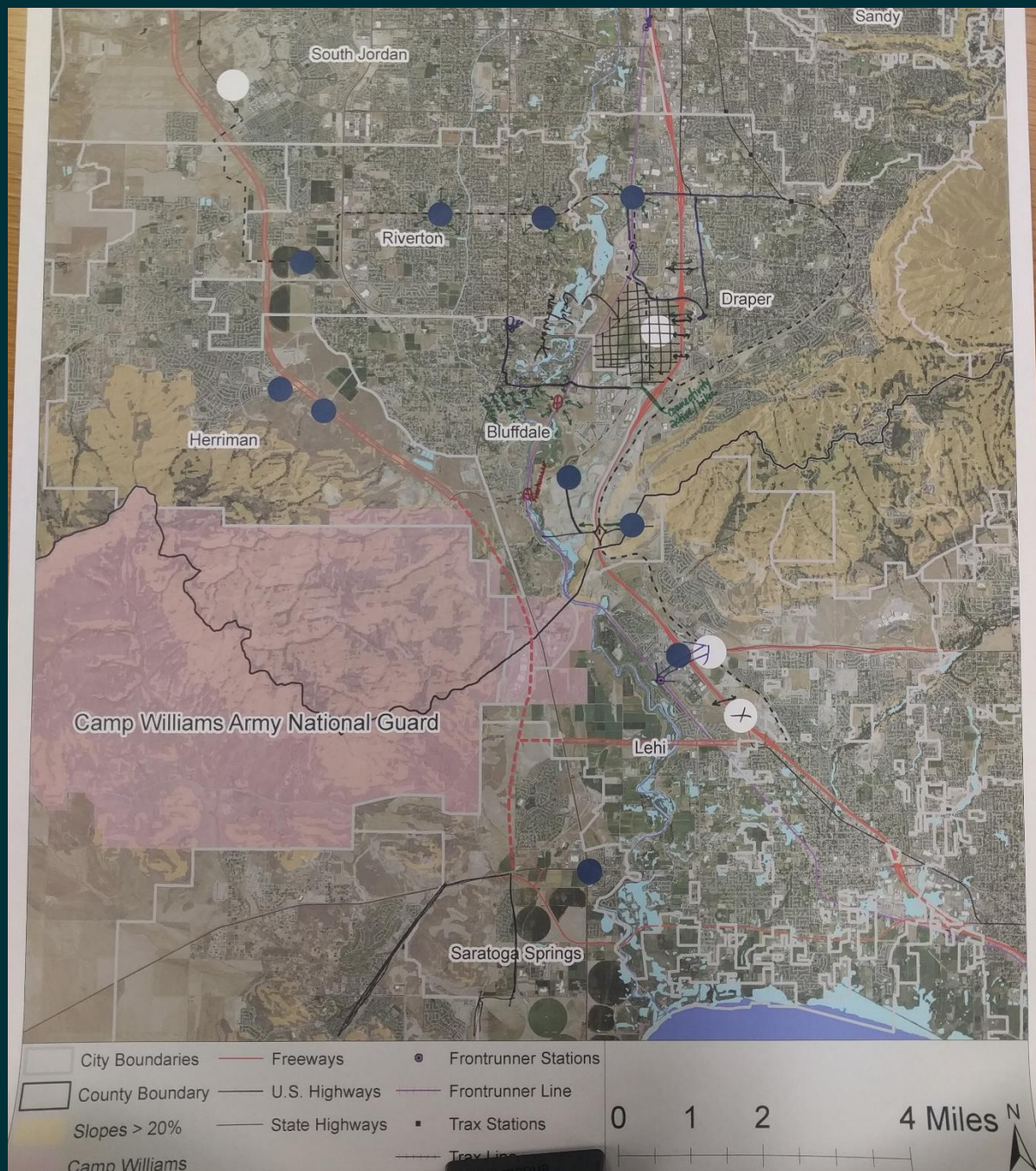


Transportation and Land Use

Keypad Polling Results

How Important Are/Is:	Mean
Freeway, roads, and intersections	8.96
Street Connectivity	8.79
Mixed land uses	8.54
Rail and bus rapid transit	8.33
Parking	8.00
Amenities	8.00
Bike, pedestrian access, and complete streets	7.83
Bus frequency and coverage	7.70
Building to street interface	7.08





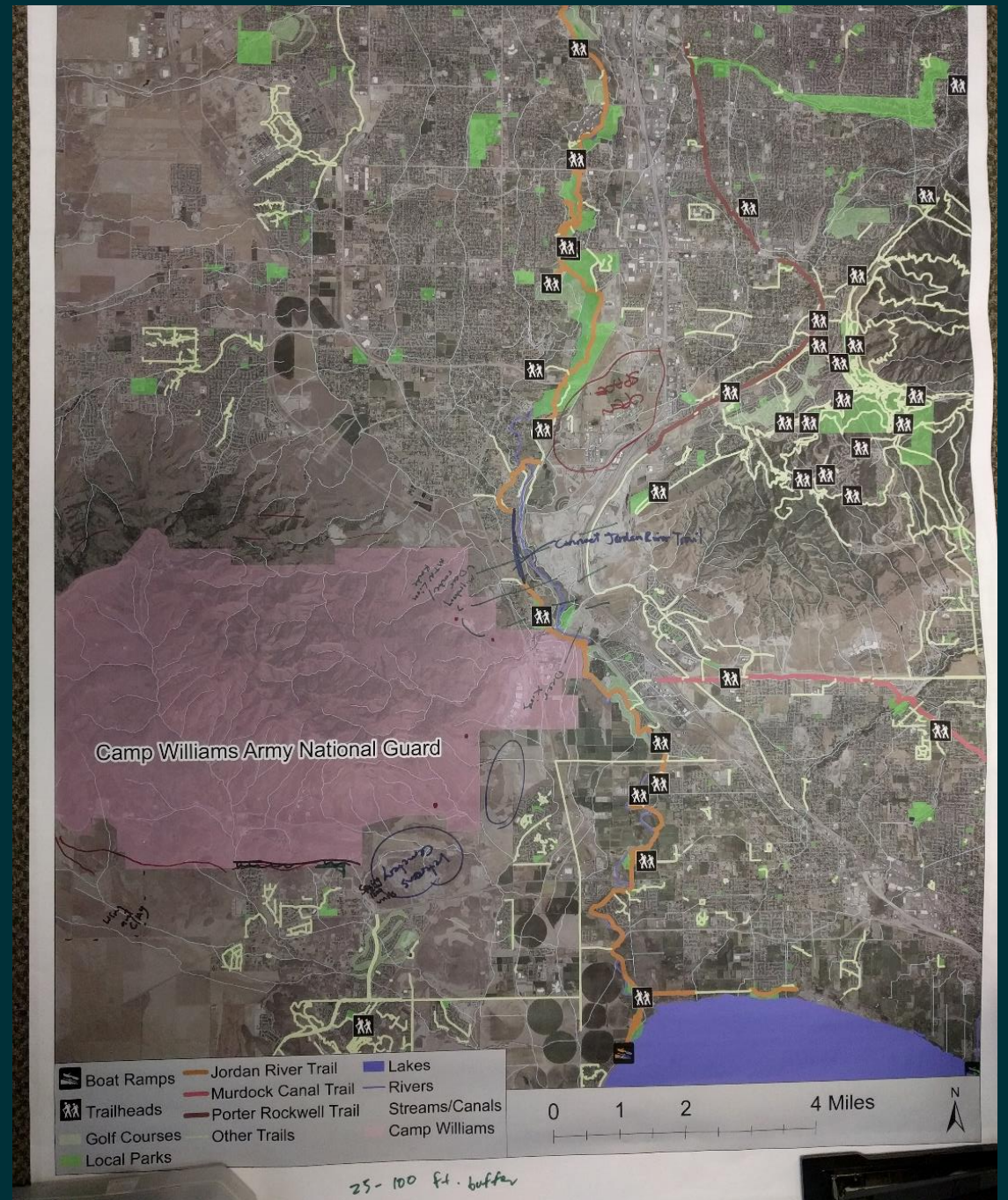
Transportation and Land Use

Common Themes and Ideas



- Dense street grid network
- Connections between TRAX and Frontrunner in Lehi
- Additional overpasses over I-15
- Transit connection between Daybreak and Draper Frontrunner station
- Enhance existing trails and provide new trails
- Efficient and well-designed parking supply
- Type, mix, and design of land use impacts transportation demand

Green Infrastructure



Green Infrastructure – Themes and Ideas

- Connect the mountain ranges for recreation
- Connect the mountain ranges for wildlife habitat
- A connected network of trails for recreation and active transportation
- Jordan River boating access and whitewater park
- Maintain and enhance paragliding opportunities
- Regional recreation hub with connections to paragliding, river, trails, skiing
- Trail system around Camp Williams, connecting to Herriman, Jordan River trail, and Draper

POINT OF THE MOUNTAIN TIMELINE

Phase 1

February

- Commission – Report Findings
Late Jan., 2017

- City / Transportation
Agency Meetings
Early Feb.

- Commission – Meeting
Mid Feb.

- Public Meetings
Feb. 15 & 16

March

- City / Transportation
Agency Meeting
Early Mar.

- Stakeholder Group Meeting
Mid Mar.

- Commission – Meeting
Mid / Late Mar.

Phase 1 End

- Phase 1 Report
Late Mar. /
Early Apr.

- Small
Stakeholder
Groups

Public Workshops

February 15, 6-7:30

- Loveland Living Planet Aquarium

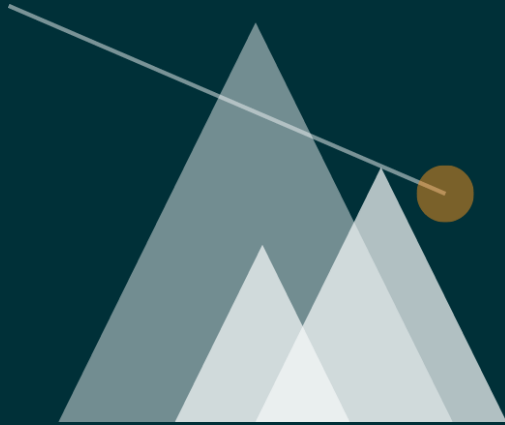
February 16, 6-7:30

- Thanksgiving Point
Ashton Gardens Visitor
Center

Public Workshops

- Brief presentation
- Keypad polling
- Mapping exercise
- Online survey for those who can't attend





STATE OF UTAH

**POINT OF THE MOUNTAIN
DEVELOPMENT COMMISSION**