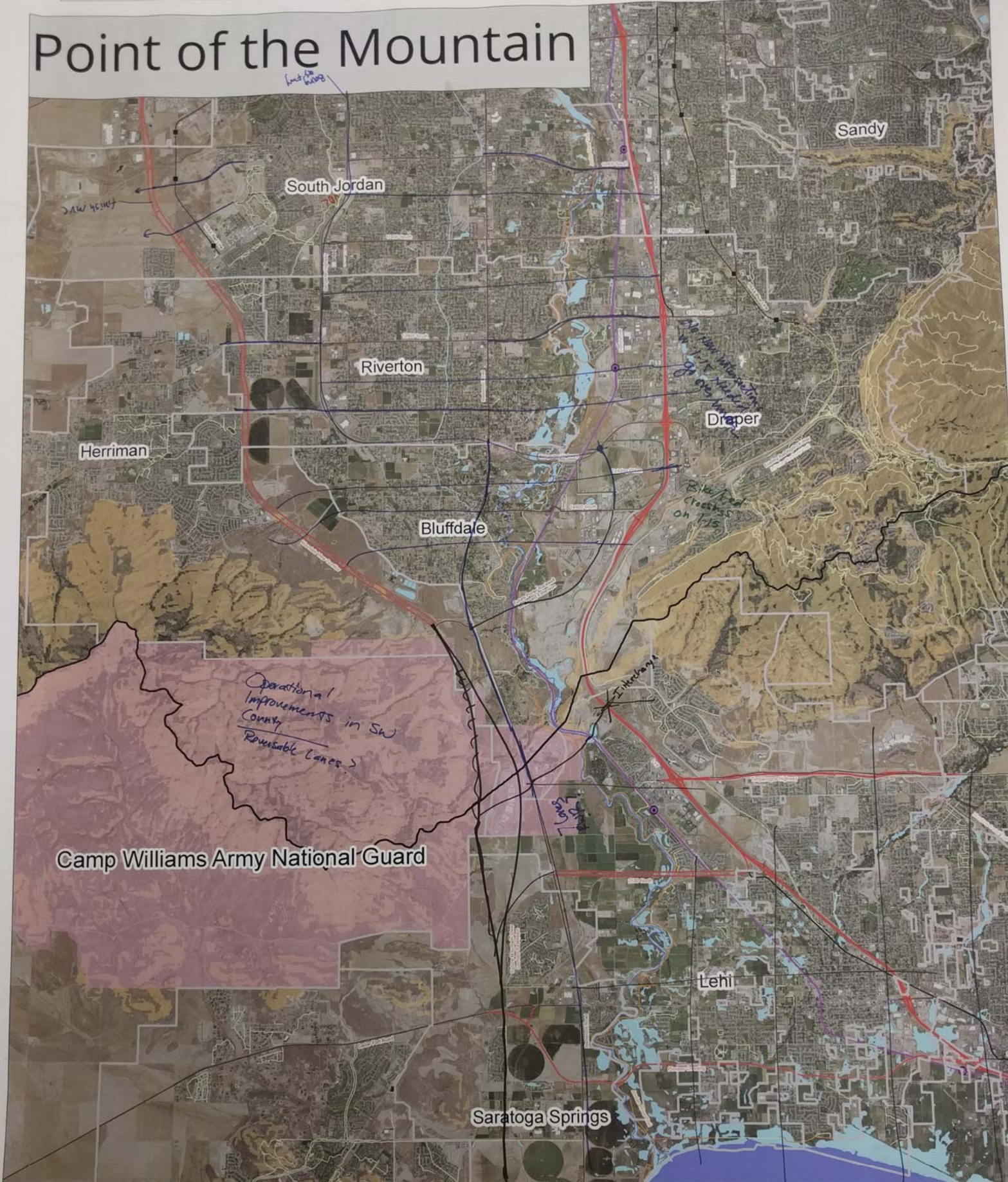


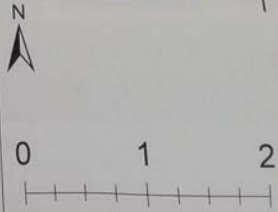
# Point of the Mountain

*East-West*



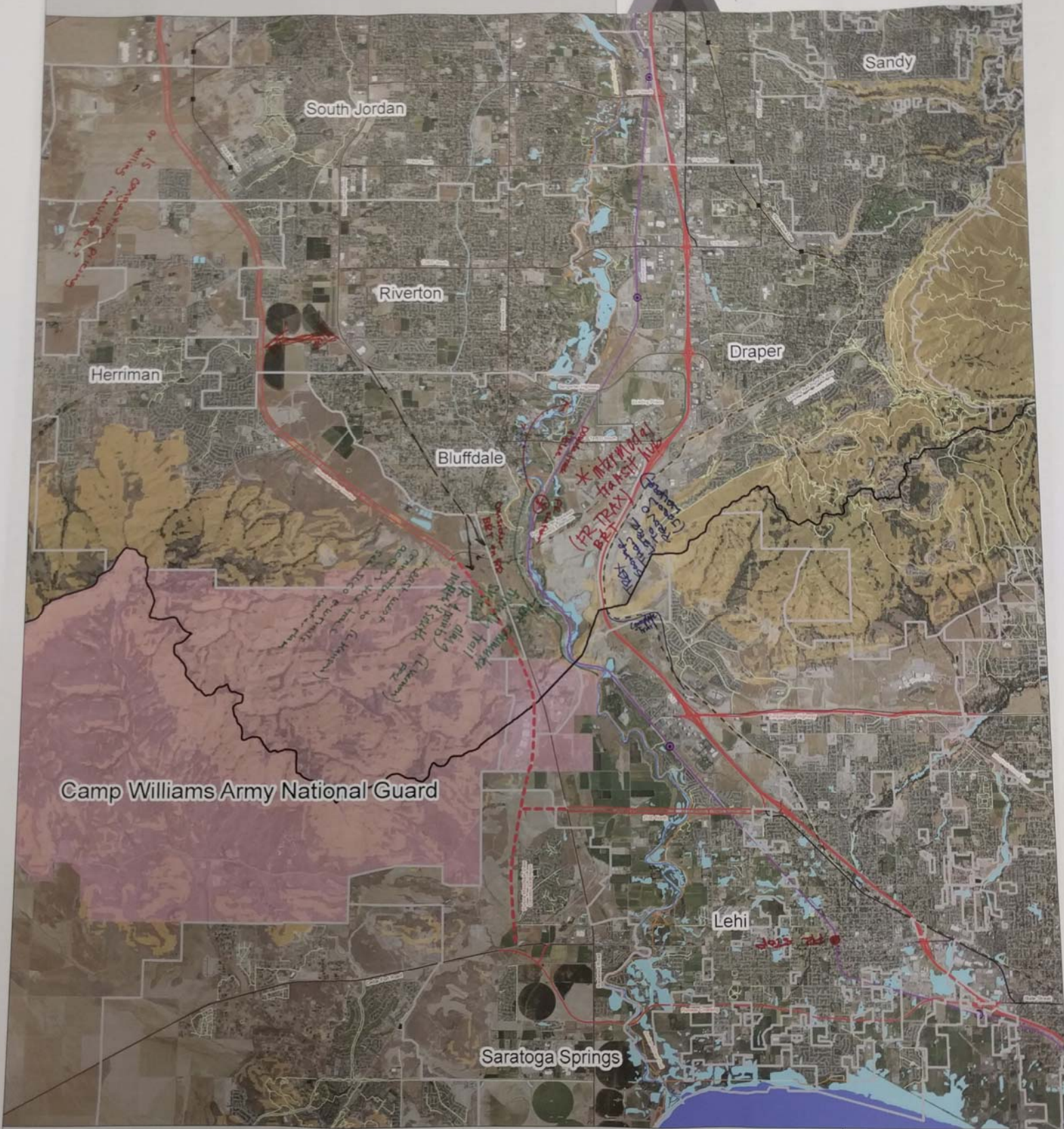
- |                 |                       |                      |                |
|-----------------|-----------------------|----------------------|----------------|
| City Boundaries | Jordan River Trail    | Frontrunner Stations | Freeways       |
| County Boundary | Murdock Canal Trail   | Frontrunner Line     | U.S. Highways  |
| Slopes > 20%    | Porter Rockwell Trail | Trax Stations        | State Highways |
| Camp Williams   | Other Trails          | Trax Line            |                |

*East-West connections #3*



# Point of the Mountain

STATE OF UTAH  
POINT OF THE MOUNTAIN  
DEVELOPMENT COMMISSION



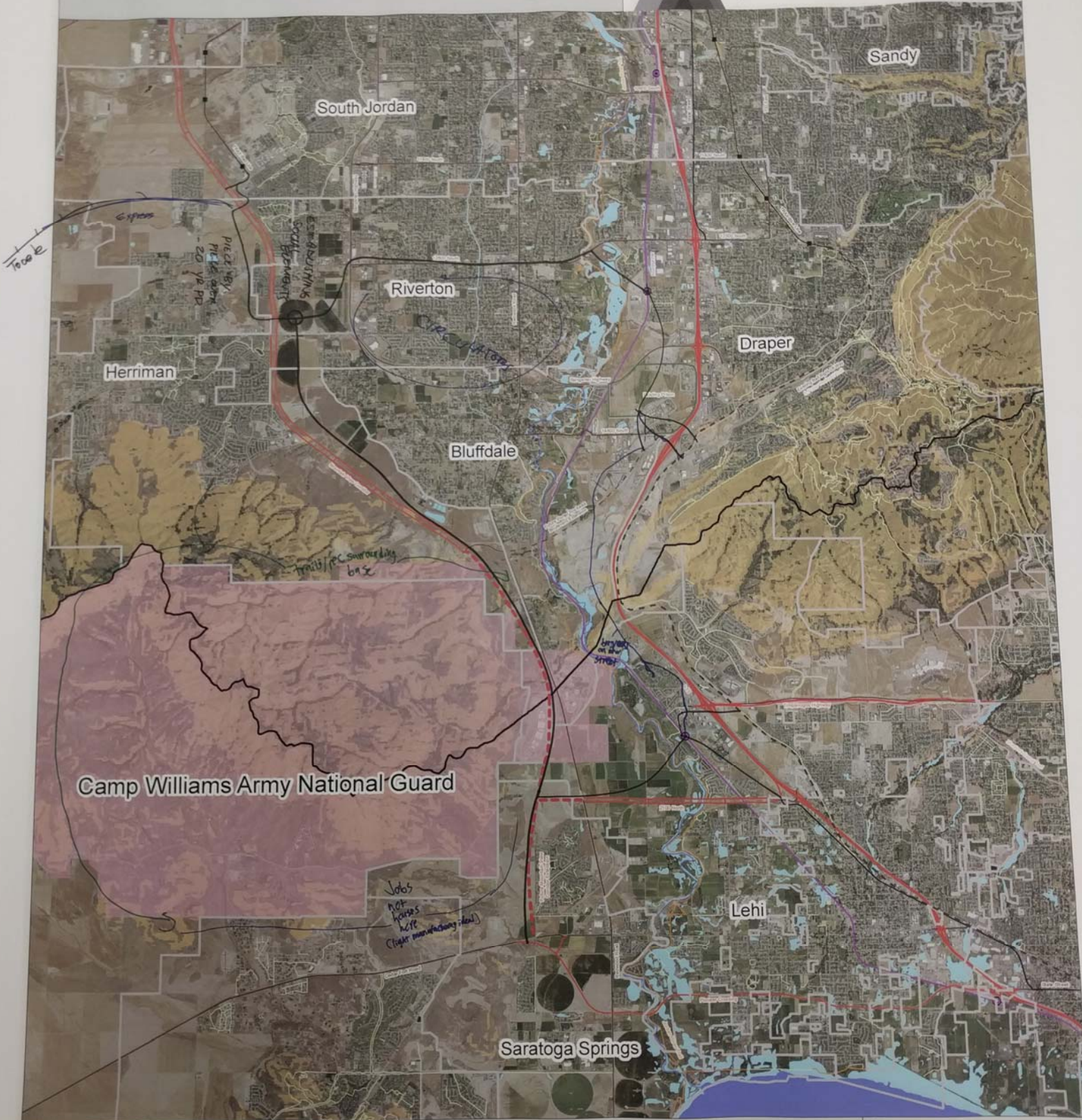
	City Boundaries		Jordan River Trail		Frontrunner Stations		Freeways
	County Boundary		Murdock Canal Trail		Frontrunner Line		U.S. Highways
	Slopes > 20%		Porter Rockwell Trail		Trax Stations		State Highways
	Camp Williams		Other Trails		Trax Line		

N  
 Envision Utah How we grow matters.  
 0 1 2 Miles

N/S #1

# Point of the Mountain

STATE OF UTAH  
**POINT OF THE MOUNTAIN**  
DEVELOPMENT COMMISSION



- |                 |                       |                      |                |
|-----------------|-----------------------|----------------------|----------------|
| City Boundaries | Jordan River Trail    | Frontrunner Stations | Freeways       |
| County Boundary | Murdock Canal Trail   | Frontrunner Line     | U.S. Highways  |
| Slopes > 20%    | Porter Rockwell Trail | Trax Stations        | State Highways |
| Camp Williams   | Other Trails          | Trax Line            |                |

N

**Envision Utah**  
How we grow matters.

0 1 2 Miles